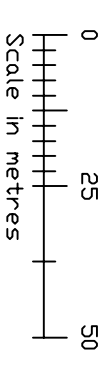
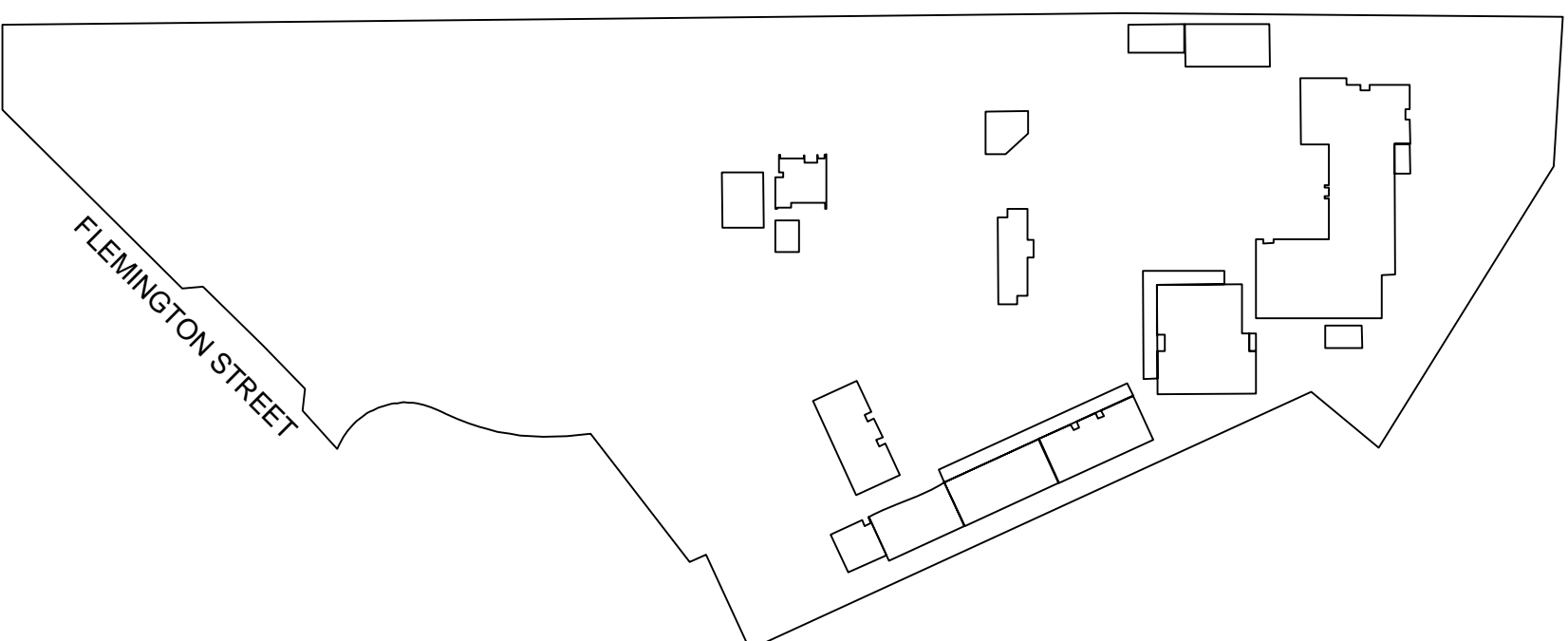


NOTES:



site plan

Schools Assets Management System

**FLEMINGTON
PRIMARY SCHOOL**

Campus Address
MOUNT ALEXANDER ROAD
FLEMINGTON 3031

Region No:
34
WESTERN METROPOLITAN



Department of
Education & Training

These drawings were prepared by LogicaCMG
for the Department of Education & Training
Any queries relating to these drawings should be referred to the
Schools Asset Data Unit, Level 3,
2 Treasury Place, East Melbourne, 3002. Ph 9637 3073 Fax 9637 2080

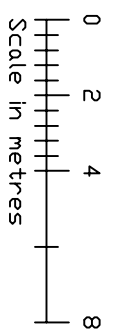
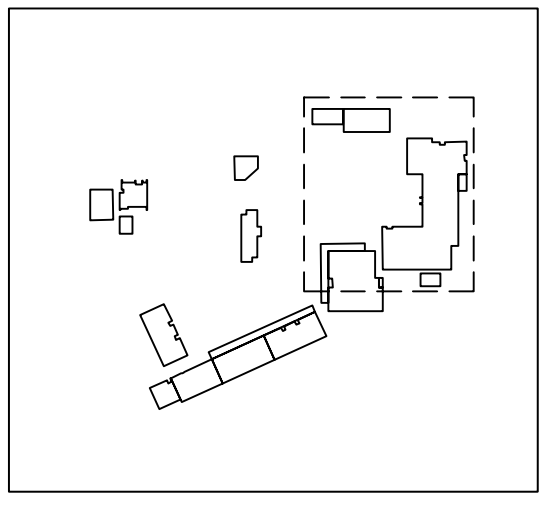
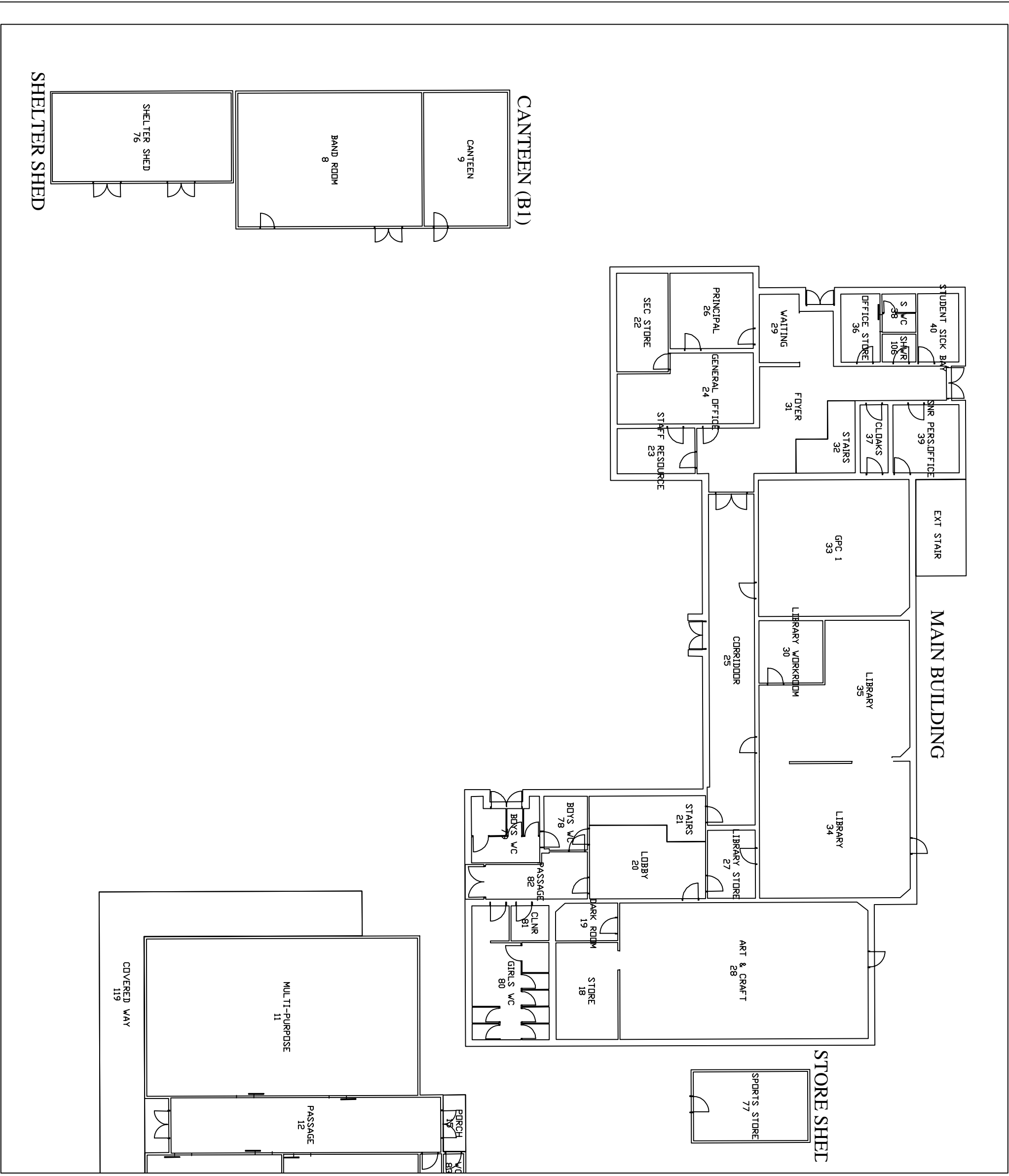
THESE DRAWINGS ARE FOR INFORMATION PURPOSES ONLY. APPROXIMATE SCALE ONLY.

Revised:
11-04-07

School No:
250

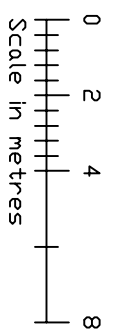
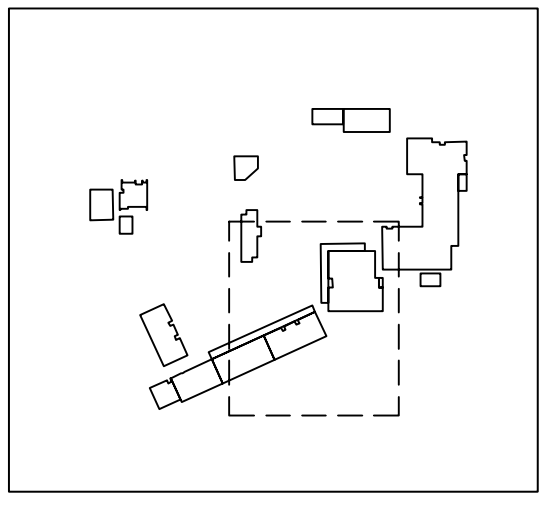
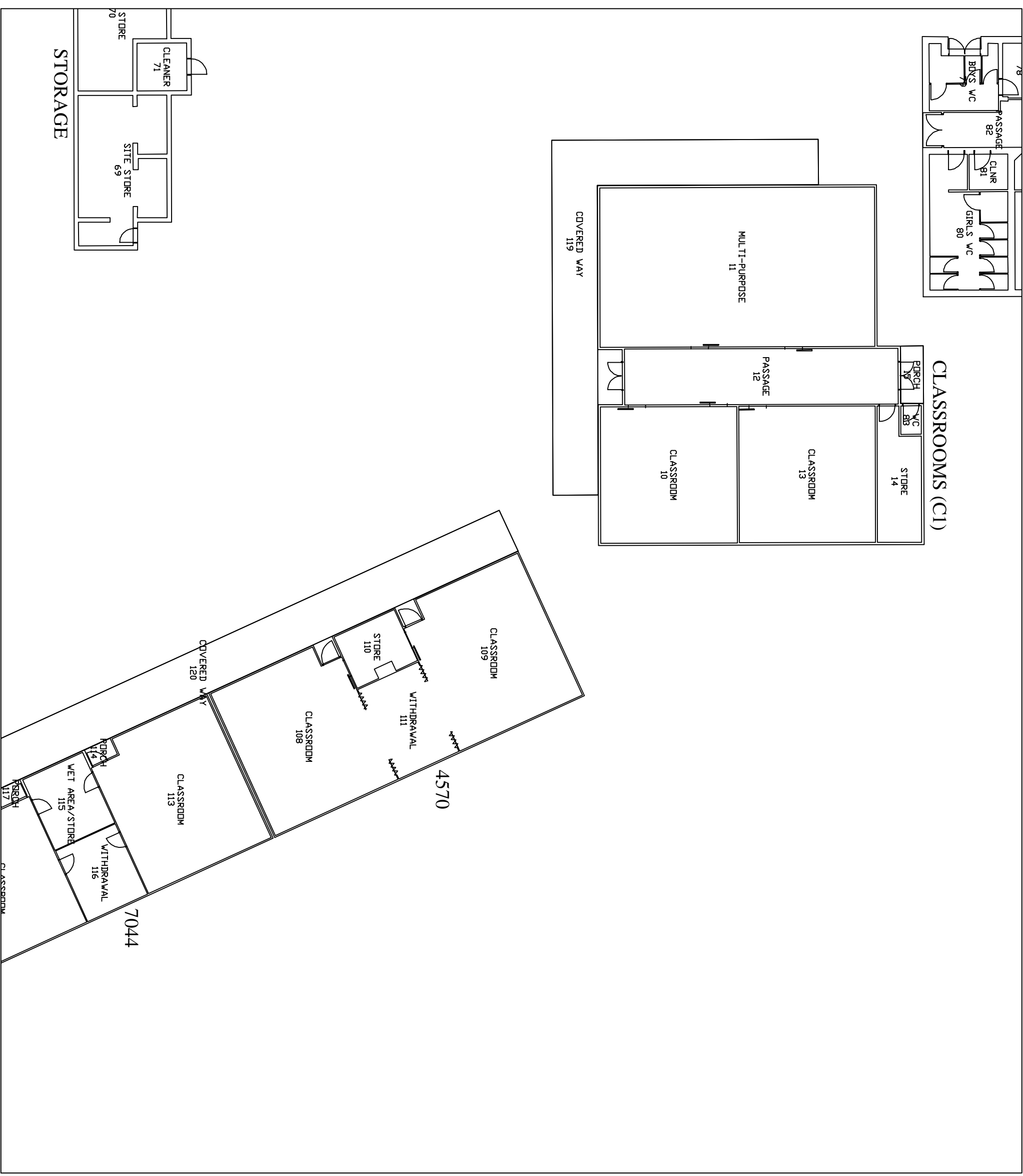
Campus No:
1

Sheet
1 of 14



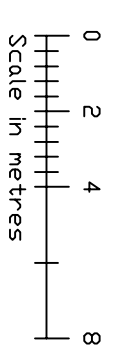
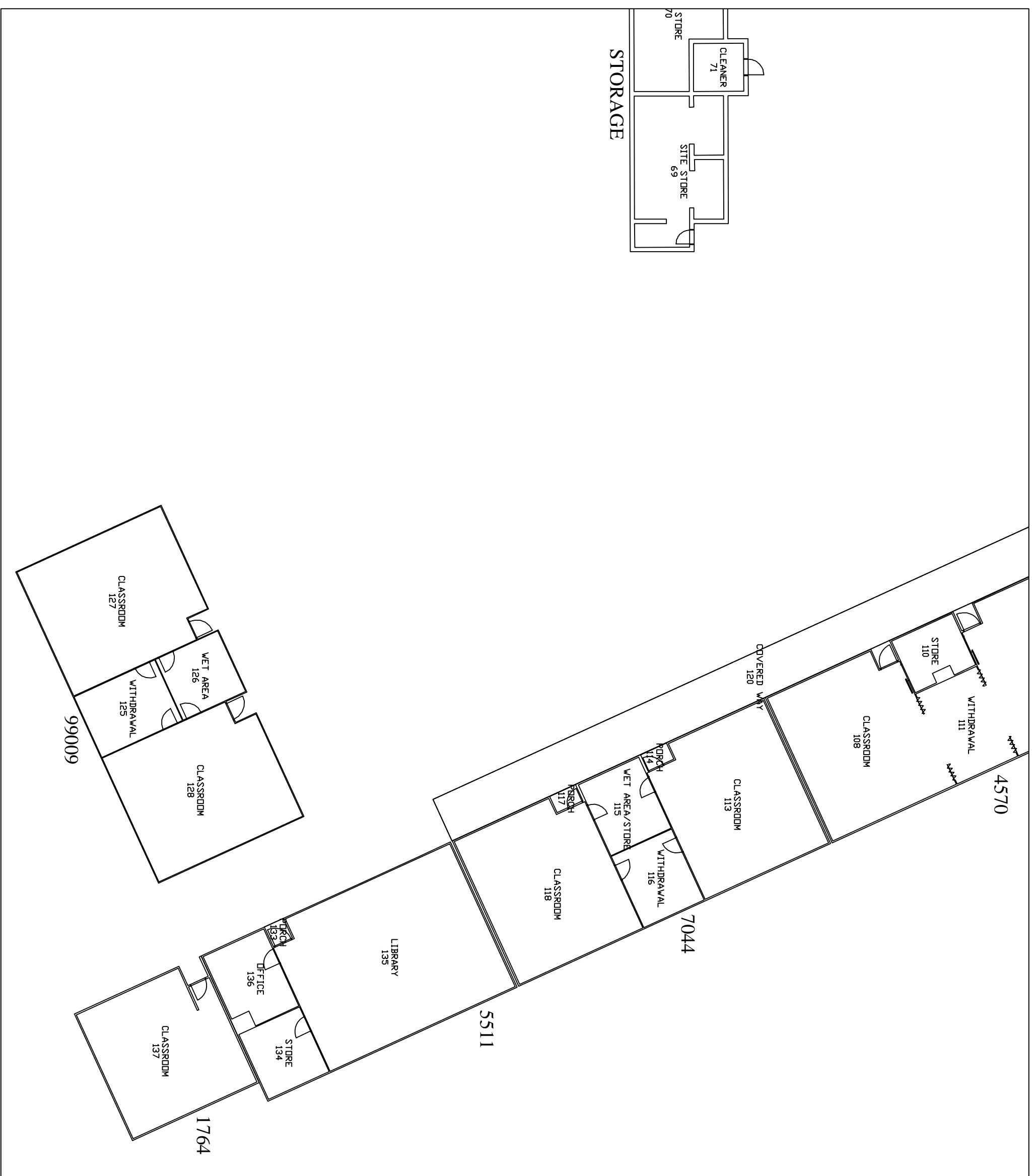
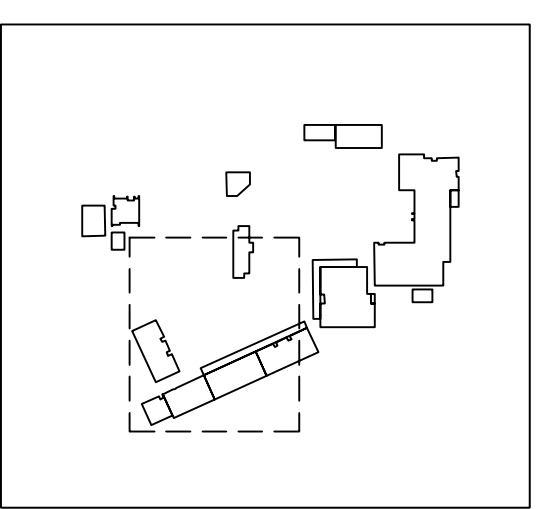
ground floor
plan

FLEMINGTON
PRIMARY SCHOOL



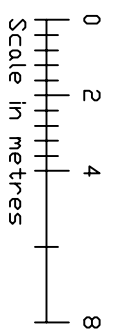
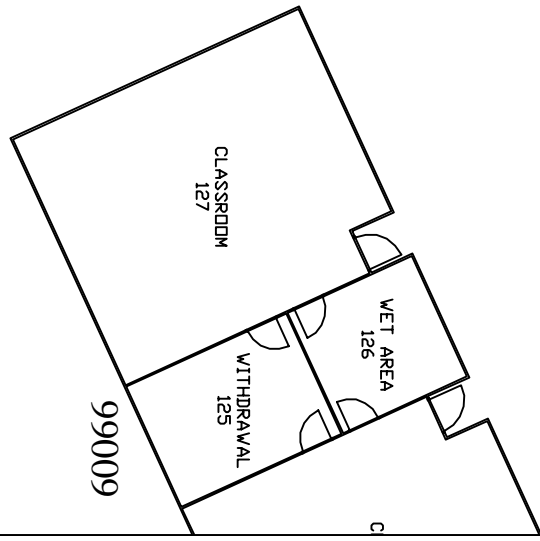
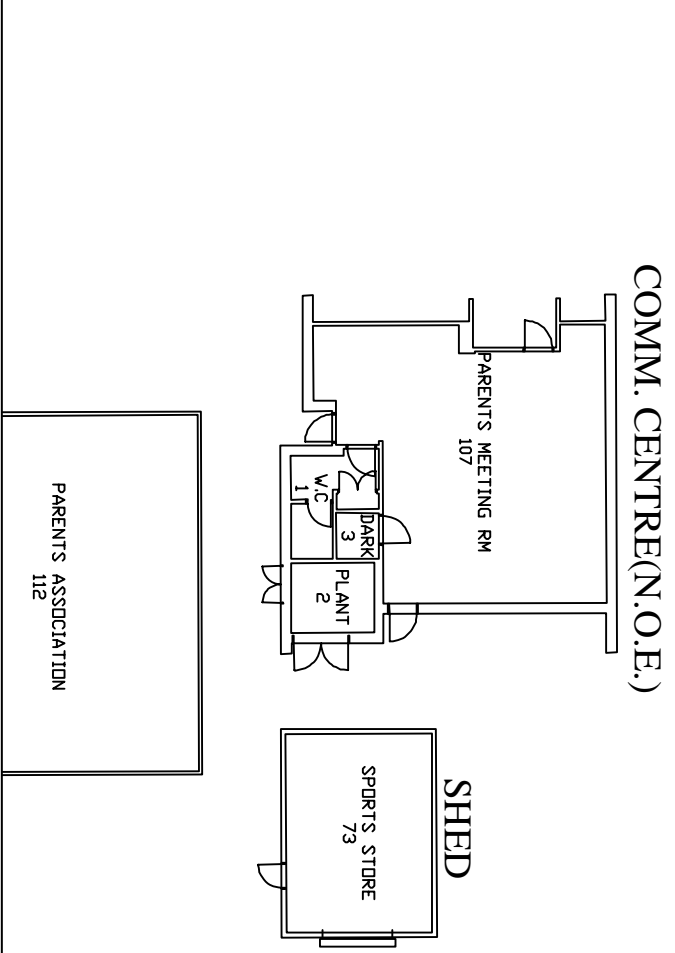
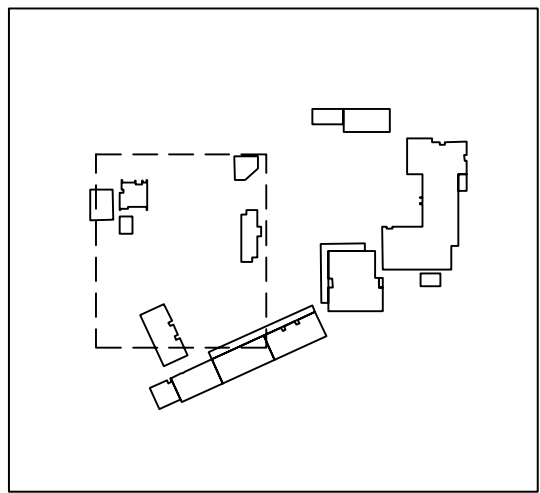
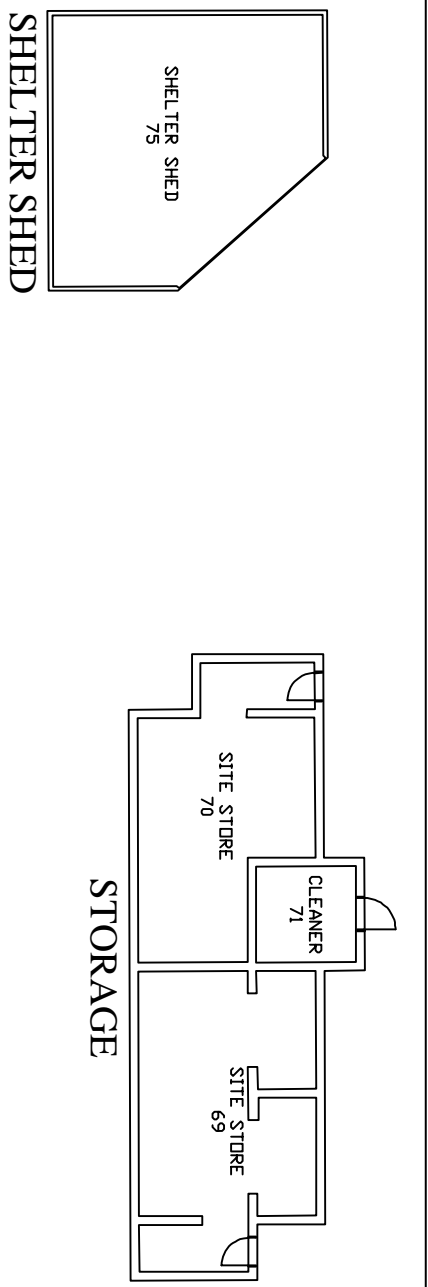
ground floor
plan

FLEMINGTON
PRIMARY SCHOOL



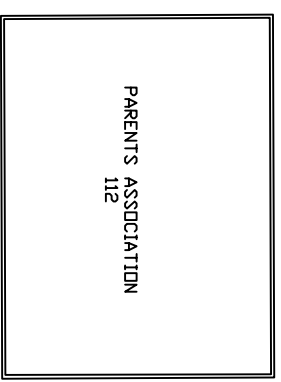
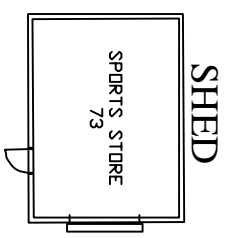
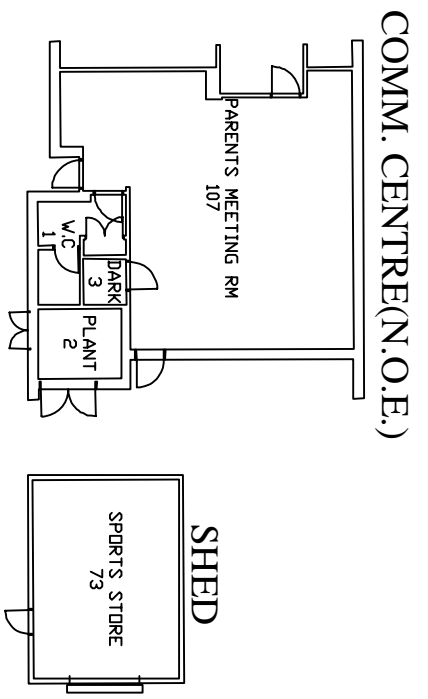
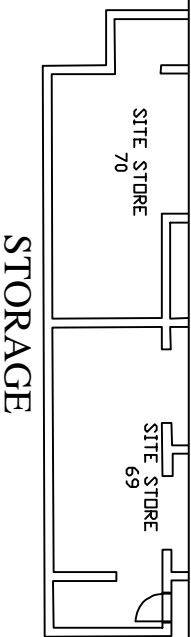
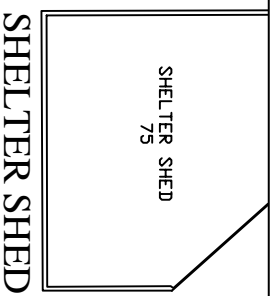
ground floor
plan

FLEMINGTON
PRIMARY SCHOOL

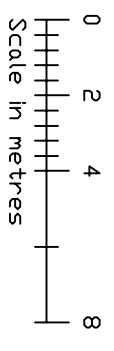
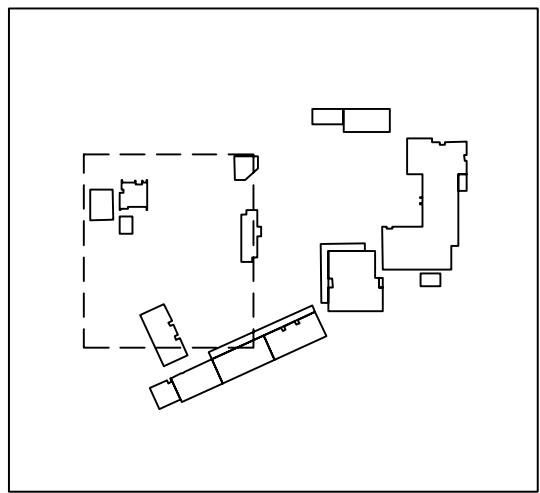
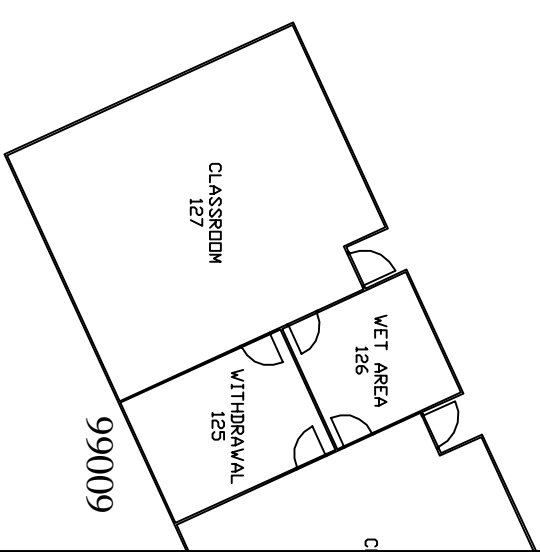


ground floor
plan

FLEMINGTON
PRIMARY SCHOOL



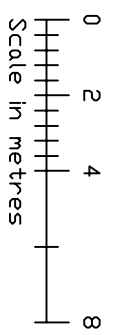
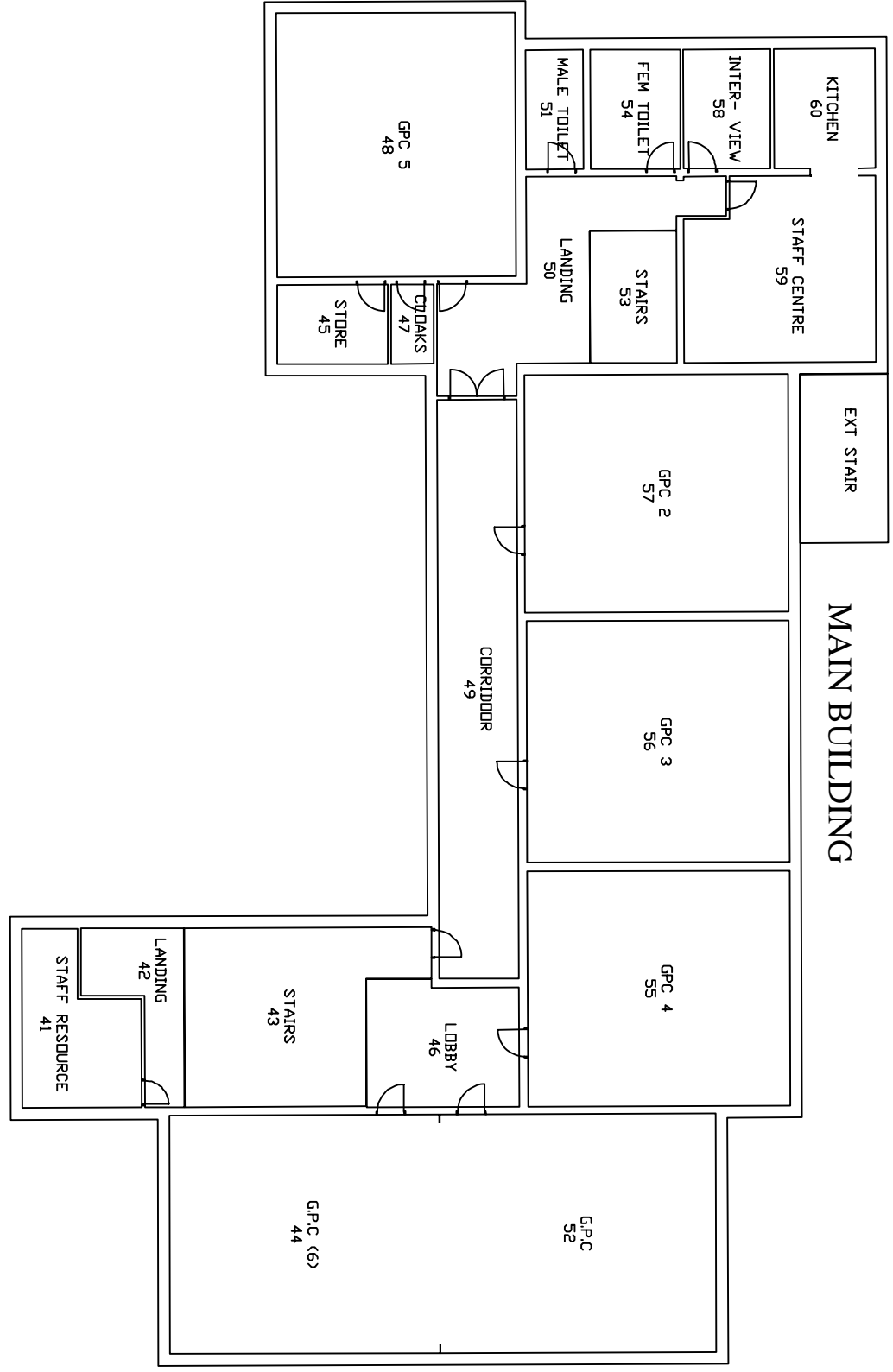
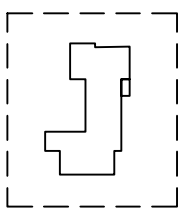
PARENTS ASSOCIATION



ground floor

plan

FLEMINGTON
PRIMARY SCHOOL



first floor
plan

FLEMINGTON
PRIMARY SCHOOL